



Locator Accessories **INSTRUCTION MANUAL**

Signal Clamp

Signal Injector

General Purpose Sonde 33kHz

General Purpose Sonde 8kHz

Metal Pipe Sondes 512Hz / 640Hz

Duct Sonde 33kHz

20m & 50m Plastic Pipe Tracers

Flexible Tracer



Accessory Range for Pipe & Cable Location Equipment

Copyright © 2016 C.Scope International Ltd. All Rights Reserved.

C.Scope International Ltd make every effort to ensure that the information we provide about our products and their use is correct. We do not accept responsibility for injury, damage, or consequential loss arising from the use of our products. Local, national and international requirements and regulations must take preference.

Contents

| | | | |
|---|----|--|----|
| General Warnings | 4 | Technical Specifications | |
| Signal Generator/ Transmitter Accessories | | Signal Clamp | 16 |
| Signal Clamp | 5 | Signal Injector | 17 |
| Signal Injector | 6 | General Purpose Sondes | 18 |
| Pipe Tracing using a Sonde | 7 | Metal Pipe Sonde | 19 |
| General Purpose Sonde | 8 | Duct Sonde | 19 |
| Metal Pipe Sonde | 8 | Plastic Pipe Tracers | 20 |
| Duct Sonde | 9 | Flexible Tracer | 21 |
| Tracing a Sonde | 10 | Maintenance | |
| Small Diameter Pipe Tracing | | Maintenance/ Handling/ Storage/ Cleaning | 22 |
| Plastic Pipe Tracer/ Flexible Tracer - Line Tracing | 12 | Support Services | |
| Plastic Pipe Tracer/ Flexible Tracer - End Tracing | 13 | Training/ Servicing/ Repairs | 23 |
| Depth Measurement | | | |
| Sonde/ Plastic Pipe Tracer/ Flexible Tracer | 14 | | |
| General Symbols | 15 | | |

GENERAL WARNINGS (see other Accessory specific warnings)



ALWAYS EXCAVATE WITH CARE

Do not use the equipment outside of the temperature range -10°C to +50°C (14°F to 122°F).
as the batteries may cease to function adequately.

Do not use the equipment in areas where hazardous gases may be present.

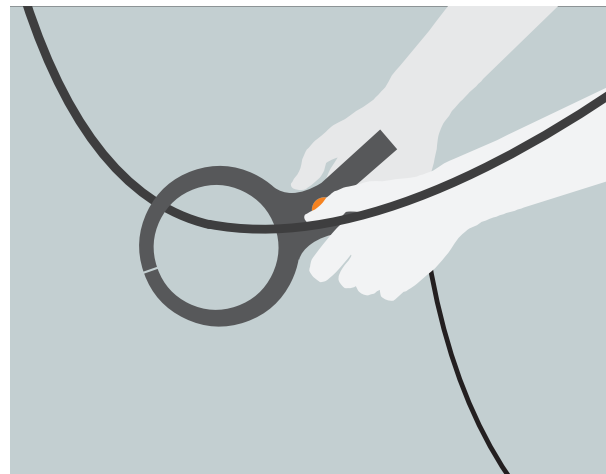
Always make sure that the Locator and Transmitter/ Sonde are set to the same frequency when used together.

Performance may be impaired by unusually strong electromagnetic fields.

Signal Generator/ Transmitter Accessories: Signal Clamp

Signal Clamp

1. Plug the Signal Clamp into the connection socket on the Signal Generator/ Transmitter.
2. Turn the Signal Generator/ Transmitter on and select either 8kHz, 33kHz or CF setting on the Signal Generator/ Transmitter.
3. Check that the jaws of the Signal Clamp are clean. Place the Signal Clamp AROUND the cable making sure that the jaws are able to fully close. The audible signal from the Signal Generator/ Transmitter should drop in pitch indicating that the clamp jaws have closed correctly and the response on the Signal Generator/ Transmitter display (if fitted) should increase.



WARNING NEVER attempt to place the Signal Clamp around electricity cables that are deliberately suspended out of reach. They may be unsheathed or unprotected cables.

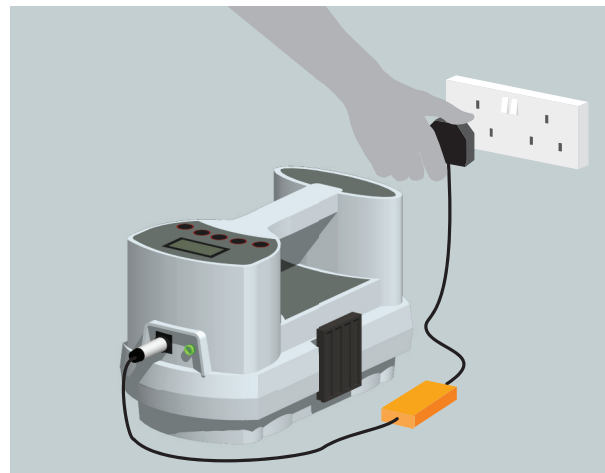


NOTE The Signal Clamp cannot apply a signal to a cable that is not earthed at both ends such as abandoned cables that have been cut off where they appear above ground or cables supplying unearthed equipment.

Signal Generator/ Transmitter Accessories: Signal Injector

Signal Injector

1. Plug the Signal Injector into the connection socket on the Signal Generator/ Transmitter and an electric outlet.
2. Turn the Signal Generator/ Transmitter on and select either 8kHz, 33kHz or CF setting on the Signal Generator/ Transmitter.
3. Turn the wall socket on. The audible tone from the Signal Generator/ Transmitter will drop in pitch to indicate a successful connection and the Signal Generator/ Transmitter display (if fitted) should go to full scale.



NOTE On two wire Protective Multiple Earth (PME) systems it may be necessary to also provide an external earth using the yellow 10 metre Auxiliary Earth Lead and Earth Stake.

NOTE Always check with the owners that it is acceptable to interrupt the supply before connecting the Signal Injector.

NOTE Using the Signal Injector may cause the system protection to trip.



WARNING DO NOT use the Signal Injector on systems with voltages in excess of 240 volts AC. Domestic systems will normally be below this voltage.

Pipe Tracing using a Sonde

Non-metallic pipes such as sewers or drains, service ducts, plastic gas and water pipes are not electrically conductive and so will not be detectable using a Locator on Power, Radio (or All/Scan Mode if available). It is also impossible to apply a detectable Signal Generator/ Transmitter signal to the non-metallic pipe or, for that matter, to the water or gas within that pipe.

If access can be gained into these pipes then a C.Scope Sonde, Plastic Pipe Tracer or Flexible Tracer should make it possible to determine their position and route.

Sondes

C.Scope Sondes are small, battery powered, waterproof transmitters that can be inserted into a pipe, such as a sewer, drain or cable duct. The position of the Sonde (and therefore the location of the pipe) can be pinpointed by using the Locator switched to Generator/ Transmitter Mode.

The Sonde is inserted into and then moved along the pipe to the point at which the pipe needs to be located.

This is normally done by fitting the Sonde to drain rods.

Alternatively, the Sonde can be attached to a continuous fibreglass duct rod, jetter hose or camera inspection system.

- The 33kHz and 8kHz General Purpose Sondes can be used in pipes as small as 50mm (2 inches) in diameter and up to 7 metres (23 foot) deep (Locator dependent).
- The 33kHz Duct Sonde can be used in pipes as small as 30mm (1.1 inches) in diameter and up to 5 metres (16 foot) deep (Locator dependent).
- 512Hz and 640Hz Metal Pipe Sondes are able to transmit a signal from within a metal pipe. The Metal Pipe Sonde can be used in pipes as small as 50mm (2 inches) in diameter. The maximum depth the Metal Pipe Sonde can be detected will depend on the pipe material and wall thickness.



NOTE A 33kHz or 8kHz Sonde will NOT transmit a signal through a metal pipe.

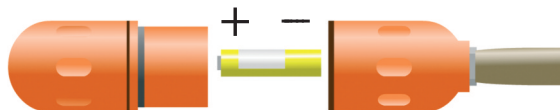
Pipe Tracing using a Sonde: Batteries

General Purpose Sonde and Metal Pipe Sonde

The General Purpose Sonde is supplied in two frequencies; 33kHz (orange casing) or 8kHz (green casing) and is powered by a single standard alkaline or Nickel-Metal Hydride rechargeable (NiMH) AA (LR6) size battery.

The Metal Pipe Sonde (red casing) is available in two frequencies, 512Hz and 640Hz, and is powered by a single AA (LR6) size alkaline battery. The frequency of the Sonde is indicated on the label within the battery compartment.

1. To turn the Sonde on, separate the two halves of the Sonde casing. Insert a new battery into the battery compartment with the positive end down.
2. Screw the two halves of the Sonde together being careful not to over tighten them. The Sonde is now transmitting a signal.
3. To turn the Sonde off the battery must be removed or reversed.



NOTE Only use alkaline or Nickel-Metal Hydride (NiMH) rechargeable AA (LR6) size batteries.

NOTE Dispose of the used battery safely in accordance with local regulations.

NOTE Always use a new battery in a Sonde if you expect to take a long time to trace the pipe or duct route.



WARNING The Locator frequency **MUST** always be set to the same frequency as the Sonde.

Pipe Tracing using a Sonde: Batteries

Duct Sonde

The Duct Sonde transmits at 33kHz only (yellow casing) and is powered by a single AAA (LR03) size alkaline battery.

1. To turn the Duct Sonde on, use a large flat bladed screwdriver to unscrew the battery cover located within the hollow end of the Sonde casing. Insert a new battery into the battery compartment with the positive end down.
2. Replace the battery cover fully using the screwdriver to secure. The Duct Sonde is now transmitting a signal.
3. To turn the Sonde off the battery must be removed.



NOTE Only use an alkaline battery.

NOTE Dispose of the used battery safely in accordance with local regulations.

NOTE Always use a new battery in a Sonde if you expect to take a long time to trace the pipe or duct route.



WARNING The Locator frequency **MUST** always be set to the same frequency as the Sonde.

Pipe Tracing using a Sonde: Tracing a Sonde

The technique used to determine the position of a Sonde is always the same irrespective of which Sonde is being used.

Before inserting the Sonde into the pipe it is best to set up the Locator so that the Sensitivity is correctly adjusted to suit the pipe depth. This is much easier to do when the Sonde is visible at the bottom of the manhole rather than already some distance up the pipe.

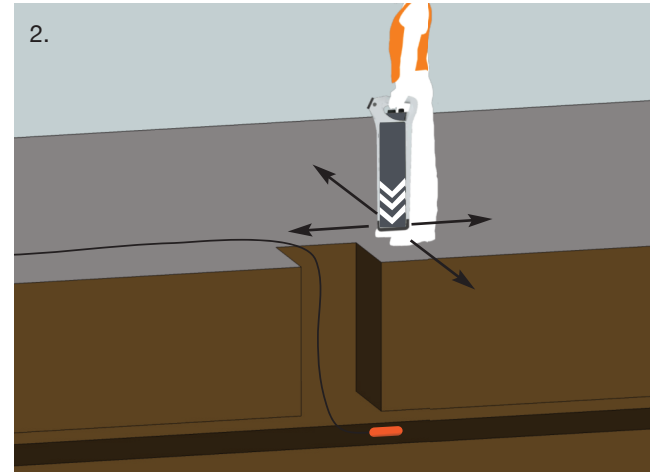
The blade of the Locator must be held **IN LINE** with the Sonde at all times.

1. Turn the Locator to Generator/ Transmitter Mode, switch on and select the correct frequency. Check the Battery Level Indicator to confirm the Locator batteries are usable. Replace if necessary.

2. Keeping the blade of the Locator in line with the Sonde, move the Locator **backwards and forwards** over the length of the Sonde. Adjust the Sensitivity until a clear peak response is shown on the display as the Locator passes directly over the position of the Sonde.

Still keeping the blade of the Locator in line with the Sonde, now move the Locator from **side to side** over the position of the Sonde. A similar peak response should be seen on the display as the Locator passes directly over the position of the Sonde. The Locator is now set up ready for tracing the Sonde.

3. Push the Sonde up the pipe.



NOTE This is at 90 degrees to the way in which the Locator is held for most other locating tasks.

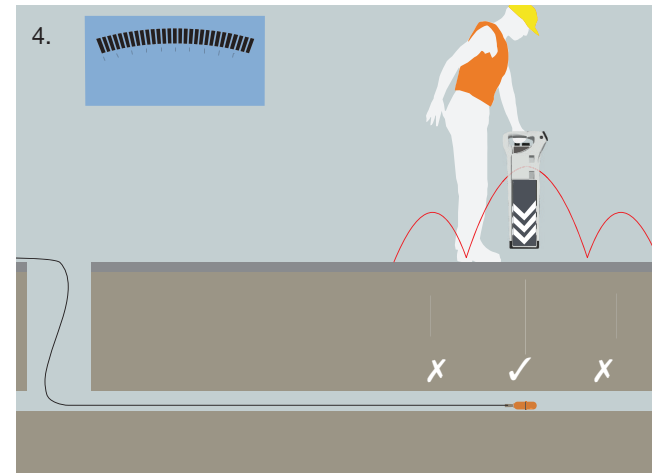
Signal Generator/ Transmitter Accessories: Tracing a Sonde

4. With the Locator turned on, walk from the pipe access point in the direction that the Sonde was pushed. A strong peak signal directly over the Sonde should be detected with two lesser 'ghost' signals found, one in front of and one behind the Sonde's true position. These ghost signals are always weaker than the main signal and should not be mistaken for the true Sonde signal.

5. Pinpoint the Sonde's exact position by moving the Locator first backwards and forwards and then from side to side to get the peak response on both occasions.

6. Push the Sonde further up the pipe and repeat the pinpointing process.

See Page 14 for depth measurement using a Sonde.

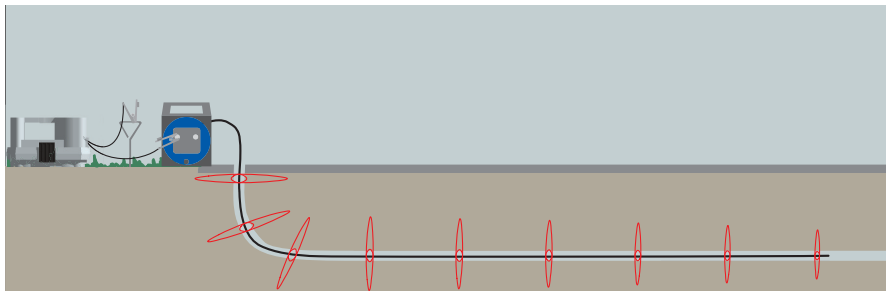


Non-Metallic Pipe Tracing: Plastic Pipe Tracers/ Flexible Tracer

The Plastic Pipe Tracers and Flexible Tracer can be used in small diameter non-metallic pipes that normal Sondes cannot fit into. Two methods of detecting and tracing can be used: line tracing and end tracing.

For **Line Tracing**, the Plastic Pipe Tracer needs to be inserted into the pipe before a signal from the Signal Generator/ Transmitter is applied to the length of the Tracer.

The slip-ring mechanism of the Flexible Tracer allows a Signal Generator/ Transmitter to be connected before it is inserted into the pipe.



The 33kHz, CF or 131kHz Signal Generator/ Transmitter signal is applied using the 'Direct Connection to a metal pipe' method as shown in the Locator Instruction Manual. Connect the red Direct Connection Lead to the red terminal of the Plastic Pipe Tracer/ Flexible Tracer. Connect the black lead to the Earth Stake. Leave the other terminal of the Plastic Pipe Tracer/ Flexible Tracer unconnected.



WARNING Authorisation may be required before using the Plastic Pipe Tracer/ Flexible Tracer on some pipes or ducts.
WARNING DO NOT touch the metal of the Crocodile Clips or the terminals of the Plastic Pipe Tracer/ Flexible Tracer when using the Signal Generator/ Transmitter.



NOTE It is important that a change of pitch is heard when making the connections to ensure that there is a detectable signal present on the Tracer.

NOTE The Signal Generator/ Transmitter signal is unlikely to travel the entire length of the Tracer within the pipe. Never assume that you have located the end of the Tracer on Line Tracing Mode. Use End Tracing if required.

NOTE The Plastic Pipe Tracer and Flexible Tracer can be used inside a metal pipe or duct but the signal will transfer onto the pipe or duct itself.

Non-Metallic Pipe Tracing: Plastic Pipe Tracers/ Flexible Tracer

End Tracing

The very tip of the Plastic Pipe Tracer/ Flexible Tracer can be energised with the signal from a Signal Generator/ Transmitter. It is acting much like a Sonde and offers a very reliable way of pinpointing the position of the tip. Pipes and ducts up to 4 metres (13 foot) deep can be traced (Locator dependent).



A 33kHz or CF Signal Generator/ Transmitter signal is applied by connecting the red Direct Connection Lead to the red terminal on the Tracer and the black Earth Lead to the other terminal. As the second connection is made a change of pitch should be heard from the Signal Generator/ Transmitter signal indicating successful connection.

The tip of the Plastic Pipe Tracer/ Flexible Tracer is then pinpointed using the same technique as for Sonde tracing with the Locator blade always in line with the Tracer.



WARNING Authorisation may be required before using the Plastic Pipe Tracer/ Flexible Tracer on some services.
WARNING DO NOT touch the metal of the Crocodile Clips or the terminals of the Plastic Pipe Tracer/ Flexible Tracer when using the Signal Generator/ Transmitter.



NOTE It is important that a change of pitch is heard when making the connections to ensure that there is a detectable signal present on the Tracer.

NOTE End Tracing is the ideal method to use to determine where the end of the pipe is but does not give the route of the pipe.

NOTE The Plastic Pipe Tracers and Flexible Tracer do not work on End Tracing mode inside a metal pipe or duct.

Depth Measurement using Sonde or Plastic Pipe Tracer/Flexible Tracer (end tracing only)



NOTE The following instructions apply equally to all Sondes, the Plastic Pipe Tracer and the Flexible Tracer in End Tracing Mode.

1. Pinpoint the exact position of the Sonde or Plastic Pipe Tracer/ Flexible Tracer tip. Take care to ensure that you are not over one of the two 'ghost' signals in front of and behind the true position.

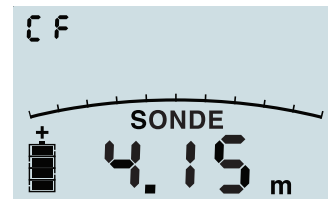
2. Rest the Locator on the ground, keeping it vertical and IN LINE with the Sonde or Tracer tip.

3. **IMPORTANT.**

Push the depth button TWICE and hold on the second push, to select Sonde Depth Mode.

The word 'SONDE' will flash on the display and the depth will then be displayed (see picture).

If the word 'SONDE' is not displayed then the depth reading will not be accurate.



Note. Metric version shown.



NOTE The depth shown is that of the Sonde and NOT of the pipe.

Depth Measurement: Error Readings

The Locator may show the following error codes when attempting a Depth Measurement.

1. 000 - The Sonde/Plastic Pipe Tracer/ Flexible Tracer is too shallow for the Locator to obtain an accurate depth, less than 0.20m (8 inches). Or 0.8m (31 inches) for the Cable Avoidance Tool XD and DXL3 Cable Avoidance Tool. It should be possible to calculate the depth by raising the Locator a set amount and then carrying out the Depth Measurement again.

2. 888 - The Sonde/Plastic Pipe Tracer/ Flexible Tracer is too deep for the Locator to measure its depth or there is no signal at all present.

3. L0 - The signal from the Sonde/Plastic Pipe Tracer/ Flexible Tracer is not strong enough for the Locator to give a reliable depth measurement.

4. OL - Overload. The signal from the Sonde/Plastic Pipe Tracer/ Flexible Tracer is too strong for the Locator to give a reliable depth measurement.

General Symbols

GENERAL SYMBOLS

Warning - Refer to manual.



Waste electrical products should not be disposed of with household waste. Please recycle where facilities exist. Check with your local authority or retailer for recycling advice.
(In the UK visit www.recycle-more.co.uk)



Conforms to EC safety requirements.



Tested to harmonised standards.
Some restrictions on use in some EC countries.
Contact Local Authorities.



Double Insulated.



Technical Specifications: Signal Clamp

| PRODUCT NAME | | SIGNAL CLAMP |
|---------------|--|--------------|
| Part No. | | YIRC-33-8 |
| Construction | Toroidal induction ring housed in robust plastic Spring loaded jaws | |
| Frequency | Tuned for optimum use with 33kHz Signal Generators/ Transmitters | |
| Dimensions | 270 x 160 x 28 mm (10.6" x 6.3" x 1.1") | |
| Lead length | 2 m (6'6.7") | |
| Compatibility | Maximum cable diameter 105 mm (4.1") Suitable for use with all C.Scope Signal Generators and Transmitters | |
| Safety | Built to conform to BSEN61010-1:1993 and BSEN 61010-2-032:1995 | |
| IP Rating | | 54 |



Technical Specifications: Signal Injector

| PRODUCT NAME | SIGNAL INJECTOR |
|--|--|
| Part No. | YIRIP-33-8 and YIRIP-33E |
| Dimensions: | |
| Box | 100 x 50 x 25 mm (3.9" x 1.9" x 1") |
| Input Lead Length | 1 m (3'3.3") |
| Output Lead Length | 1.5 m (4'11") |
| Construction | Encapsulated, robust housing Moisture / dust resistant to IP54 |
| Electrical Output (Mains side): | |
| Electrical Isolation | Class II (Double Insulated) |
| Maximum Voltage | 250 V rms |
| Maximum Load | <10mA (predominantly capacitive) |
| Frequency range | 45-65 Hz |
| Mains Plug Connector: | |
| | UK, 3 pin to BS1363, load between Live and Earth (YIRIP-33-8) or 2 pin European Shuko style (YIRIP-33E) |
| Electrical Input (Signal Generator/ Transmitter side): | |
| Connector | 3 pin XLR male (industry standard) |
| Maximum Voltage | 42 V rms |
| Maximum Power | <250mW when driven from C.SCOPE Signal Generator/ Transmitter |
| Input Impedance | 2000 Ohms |
| Frequency | 32,768 Hz |
| Safety | Built to conform to BSEN61010-1:1993 and BSEN 61010-2-032:1995 |



Technical Specifications: General Purpose Sondes 8kHz/33kHz

| 33kHz GENERAL PURPOSE SONDE | |
|-----------------------------|--|
| PRODUCT NAME | |
| Part Numbers | YIRS-33 |
| Frequency | Transmits 32,768Hz |
| Construction | Rugged plastic casing, stainless steel stud. Epoxy resin filled |
| Colour | Orange casing for 33kHz |
| Detection Depth Range | Up to 7 m (23 foot) (dependent on type of C.SCOPE Locator and site conditions) |
| Dimensions | 39mm diameter x 121 mm long (1.5" x 4.7") |
| End fitting | M10 threaded stud Supplied with Rod Connector to fit standard drain rods with 7 T.P.I. thread |
| Battery Type | Single AA, LR6 (either alkaline non-rechargeable or NiMH rechargeable) |
| Battery Life | Up to 15 hours |
| Approvals | EN301 489 EN300 330 |
| IP Rating | 68 |



| 8kHz GENERAL PURPOSE SONDE | |
|----------------------------|--|
| PRODUCT NAME | |
| Part Numbers | YIRS-8 |
| Frequency | Transmits 8,192Hz |
| Construction | Rugged plastic casing, stainless steel stud. Epoxy resin filled |
| Colour | Green casing for 8kHz |
| Detection Depth Range | Up to 7 m (23 foot) (dependent on type of C.SCOPE Locator and site conditions) |
| Dimensions | 39mm diameter x 121 mm long (1.5" x 4.7") |
| End fitting | M10 threaded stud Supplied with Rod Connector to fit standard drain rods with 7 T.P.I. thread |
| Battery Type | Single AA, LR6 (either alkaline non-rechargeable or NiMH rechargeable) |
| Battery Life | Up to 15 hours |
| Approvals | EN301 489 EN300 330 |
| IP Rating | 68 |



Technical Specifications: Metal Pipe Sonde/ Duct Sonde

| PRODUCT NAME | METAL PIPE SONDE |
|-----------------------|--|
| Part Numbers | YIRS-512 and YIRS-640 |
| Frequency | Transmits 512Hz and 640Hz respectively |
| Detection Depth Range | Up to 5 metres (16'5") dependent on pipe material and wall thickness |
| Dimensions | 39mm diameter x 121 mm length (1.5" x 4.7") |
| End fitting | M10 threaded stud supplied with 7 t.p.i. rod fitting (other adaptors are available) |
| Battery Type | 1 x AA (IEC type LR6) |
| Battery Life | Up to 25 hours intermittent use at 20°C (68°F) |
| Approvals | EN301489 EN300 330 EAN 5060086350791 |
| IP Rating: | 68 |



| PRODUCT NAME | DUCT SONDE 33kHz |
|-----------------------|---|
| Part No. | YIRSD-33 |
| Construction | Waterproof, robust plastic O Ring battery compartment seal, stainless steel end fittings |
| Frequency | Transmits 32,768Hz continuous |
| Detection Depth Range | 4.5m (15') dependent on type of C.SCOPE Locator and site conditions |
| Dimensions | 24mm diameter x 200mm length (1" x 7.8") |
| End fitting | Standard rod thread (1" Whitworth 16 T.P.I.) female connector at one end |
| Battery Type | 1 x AAA (IEC type LR03) Alkaline |
| Battery Life | Up to 20 hours intermittent use at 20°C (68°F) |
| IP Rating | 68 |



Technical Specifications: Plastic Pipe Tracers

| | |
|--|--|
| PRODUCT NAME | 20M AND 50M PLASTIC PIPE TRACER |
| Part No. | YIRPPT20-33 and YIRPPT50-33 |
| Frequency | Operates at 32,768Hz |
| Detection Depth Range: | |
| Line Detection | 3m (10') |
| Tip Detection | 4m (13') |
| | (dependent upon Locator and Signal Generator type and site conditions) |
| Compatibility | Any Signal Generator or Transmitter with 33kHz or 33/131kHz combined output |
| Rod Length | 20m or 50m (65' and 160') |
| Rod and Sonde Diameter | 6mm (0.2") |
| Rod Minimum Bend Radius | 50mm (1.9") |
| Construction: | |
| Reel | Robust plastic housing |
| Rod | Flexible, chemical resistant plastic |
| Reel dimensions (20m) | 150 x 120 x 250mm (5.9" x 4.7" x 9.8") |
| Reel dimensions (50m) | 165 x 290 x 240mm (6.5" x 11.4" x 9.4") |
| Reel weight (20m) | 1248g (2 pound 12 ounces) |
| Reel weight (50m) | 2073g (4 pound 8.5 ounces) |
| Operational Temperature Range | -20°C to 50°C (-4°F to 122°F) |
| Storage Temperature Range | -20°C to 50°C (-4°F to 122°F) |
| IP rating for actual Tracer Rod & Tip | 68 |
| IP rating for Plastic Pipe Tracer Casing | 54 |



Technical Specifications: Flexible Tracer

| | |
|--|--|
| PRODUCT NAME | 80 M FLEXIBLE TRACER |
| Part No. | YIRRFT-80 |
| Frequency | Optimised for 32,768Hz |
| Detection Depth Range: | |
| Line Detection | 3 m (10 foot) |
| Tip Detection | 4 m (13 foot) |
| (dependent upon Locator and Signal Generator type and site conditions) | |
| Compatibility | Any Signal Generator or Transmitter with 33kHz or 33/131kHz combined output |
| Rod Length | 80 m (260') |
| Rod Diameter | 5 mm nominal (0.2") |
| Rod Material | Quality sleeved fibreglass rod with three integral copper wires |
| Rod Minimum Bend Radius | 10 cm (3.9") reducing to 15 cm (5.9"), 5 cm (1.9") from Tip |
| Rod wire diameter | 0.45 mm each wire (0.018") |
| Tip Length | 160 mm (6.3") |
| Tip Diameter | 9.5mm (0.37") |
| Tip Material | Brass |
| Frame Size | 58.8 x 28.8 x 48.5 cm (1'11" x 11.3" x 1'7") |
| Frame Material | Powder coated 16 mm steel tube (0.6") |
| Reel Diameter | 48 cm (1'7") |
| Weight | 7.5 kg (16 pound 8.5 ounces) |
| Slip ring assembly | Sealed multi-wire duplexed |
| Operational Temperature Range | -20°C to 50°C (-4°F to 122°F) |
| Storage Temperature Range | -20°C to 50°C (-4°F to 122°F) |
| IP rating for Tracer Rod & Tip | 68 |
| IP rating for Casing | 54 |
| IP rating for Terminal Box | 66 |



Maintenance

Maintenance

All C.Scope accessories must be visually inspected for any signs of deterioration prior to each use. Do not use if there is any deterioration.

There are no user serviceable parts for these Accessories.

Handling

All C.Scope accessories are rugged products designed for the rigours of every day use. However, to ensure that the specified performance is maintained, it is essential to treat them with care by avoiding shocks, vibration and excesses of temperature. They are not guaranteed to prevent water ingress if immersed with the exception of all Sondes.

Cleaning

The equipment can be cleaned with a sponge dampened with warm water. A mild soap may be used if required. The use of solvents should be avoided.

Do not allow moisture in the battery compartments or near the connectors.

Storage

The equipment should be stored in a clean and dry environment. The temperature should not exceed the range -10°C to +50°C (14°F to 122°F). If stored for long periods the batteries should be removed.

Support Services: Training/ Servicing/ Repairs

Training

This Instruction Manual is comprehensive but cannot replace expert tuition. Excellent training is available directly from C.Scope and via authorised C.Scope agents, cost effectively, at your chosen location. C.Scope recommend operators are trained before using this equipment.

Servicing

Routine periodic servicing and re-calibration of your equipment is available from C.Scope and C.Scope Authorised Service Centres if required.

Repairs

Before returning equipment suspected of being faulty, please check the machine carefully with a fresh set of batteries. Check the battery connections and rotate the batteries in the holder. Refer to the section in the manual on functional checks and if possible substitute known good equipment as a confirmation.

If the problem persists then contact the company from whom you purchased the equipment, or contact C.Scope indicating the nature of the fault. Advice on the best course of action can then be given.



C.Scope International Ltd

Kingsnorth Technology Park
Wotton Road
Ashford
Kent TN23 6LN
United Kingdom

Telephone. +44(0)1233 629181

Fax. +44(0)1233 645897

email. info@cscope.co.uk

website. www.cscopelocators.com