

C.SCOPE

PRECISION PIPE AND CABLE LOCATION



DATA LOGGING CABLE AVOIDANCE TOOLS

C.Scope PC Toolkit User Guide

How to transfer Locator Activity Records
from C.Scope CXL-DLB, DXL-DLB and MXL-DLB
Data Logging Cable Avoidance Tools to a computer

For use with Microsoft® Windows XP™, Windows Vista™
and Windows 7™ only



C.Scope PC Toolkit for Windows® based computers

Introduction

The C.Scope Toolkit enables Locator Activity Records ('Records') from any of the following C.Scope Data Logging Cable Avoidance Tools: CXL-DLB, DXL-DLB, MXL-DLB ('Locators'), to be transferred to a (Windows® based) computer and then examined.

The Records can be viewed in a variety of ways; as a raw time-stamped data format in WordPad, exported in Excel® for integration into a reporting or similar computer application, or viewed in a simple pie chart format.

Before you start

1. Go to www.support.cscopelocators.com to register and download your free C.Scope Toolkit.

By registering you will be informed of any updates containing new features. These updates are free.

Note: When installing the software, ensure you install as an Administrator. This is achieved by either right-clicking the install file and clicking the 'Run as Administrator' option or logging in as Administrator and installing the software.

You may be asked for the Administrator Password. You will have to refer to the provider of your IT support for this.

2. Ensure that you have Bluetooth® wireless technology capability on your computer. A computer that does not have embedded Bluetooth® wireless technology can be used with a Bluetooth® wireless technology adaptor that will enable it to communicate with other Bluetooth® wireless technology devices (such as mobile phones, mice and keyboards).

4. Ensure that your Locator has a set of good condition batteries and that any other nearby Bluetooth® wireless technology devices are switched off.

Before you use the Toolkit

The first step is to 'pair' the Locator to your computer using the Bluetooth® wireless technology. The Records from the Locator can then be transferred to your computer.

The method of 'pairing' may vary depending on the version of Windows® Operating System on your computer. Please consult the appropriate PC User Guide for assistance.

The On/Off switch on the Locator must be held on until pairing is complete.

During the 'pairing' process, you may be prompted to provide the following information:

- A 4 digit PIN number. Enter 0000

- A 'port number'. Ensure that the port number is between 1 and 15.

Once you have paired your Locator with your computer, you may now release the On/Off switch on the Locator.

Note: You only need to go through this process once with each Locator to add it to the list of valid Locator serial numbers on your computer.

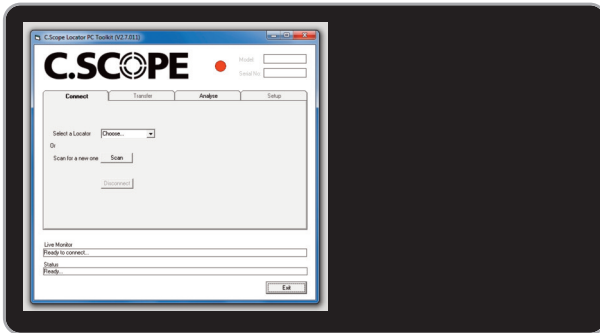
We have help files and support guides on our website www.support.cscopelocators.com to help in the Bluetooth® wireless technology pairing process.

Overview

Overview

Open up the Toolkit by clicking on the Locator icon on your computer desktop.

There are tabs on the Toolkit that allow you to Connect, Transfer, Analyse and Setup.



CONNECT:

This tab allows you to configure the Bluetooth® wireless technology connection between the Locator and your computer.

TRANSFER:

This tab allows the transfer of Records from your Locator to your computer.

ANALYSE:

This tab details the options for viewing the transferred Records.

SETUP:

This tab lets you amend the User Settings, and advanced menu settings.

CONNECT

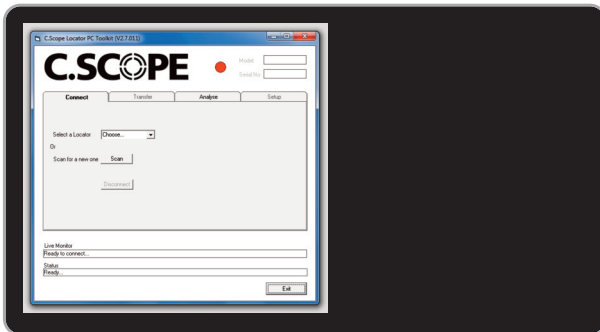
The first time that you wish to transfer Records from a paired Locator, right click on the Bluetooth® logo in your toolbar or system tray to open 'explore your Bluetooth® neighbourhood' and select by the serial number, the Locator that you wish to connect to.

Note: If the serial number of the unit does not appear then the Locator needs to be 'paired' (see page 2).

Right click on the selected Locator and select 'Connect'.

You will see the centre of the Bluetooth® logo in your tool tray change from white to green.

Return to the Toolkit.



If this is the first time that you have transferred Records from this particular Locator, select 'Connect' from the tab list and then 'Scan'.

If you have transferred Records from this Locator before, then simply select its serial number from the 'choose box'. Pull and hold on the On/Off switch on the Locator.

The C.Scope Toolkit will prompt you with a dialogue box asking if you wish to connect with a Locator by quoting the model type and serial number in a pop-up box. If it does not appear, press 'Scan' again.

When the C.Scope Toolkit is recognising the Locator, the red indicator will change to yellow. Once it has connected, the indicator will change from yellow to green indicating that the Toolkit has connected the selected Locator to the computer correctly.

A further indication is that the model type, serial number and any registered user name will appear in the top right hand corner of the program box.

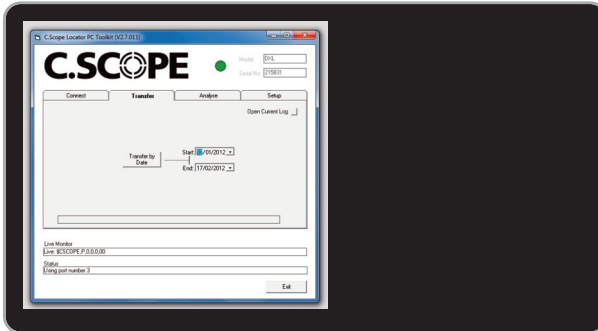
You will notice a '\$' and flashing 'CSCOPE' in the 'Live Monitor' box.

You are now connected and ready to transfer Records from the Locator.

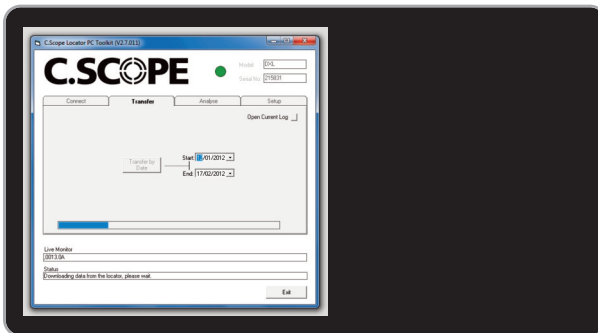
On the main screen select the 'Transfer' tab.

TRANSFER

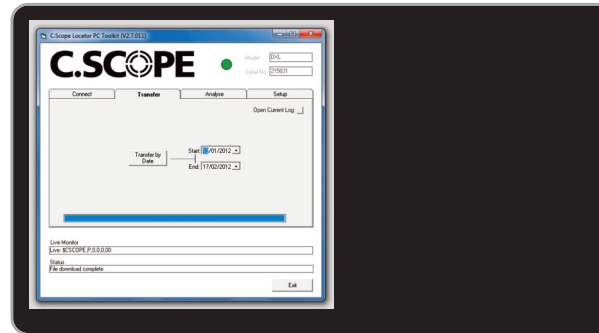
To transfer Records between specific dates, enter those dates into the 'start' and 'end' date boxes.



Select 'Transfer by Date'. Progress is indicated by a moving blue bar. The Live Monitor window will show the Records as they are being stored on your computer.



Ensure that the On/Off switch on the Locator is held on until the 'Transfer complete' message appears in the Status window.



Next, return to the 'Connect' tab, press the 'Disconnect' button and release the Locator On/Off switch.

You can now review the Records using the 'Analyse' tab.

Note: The transferred Records are saved with a detailed file name to allow easy identification using your computer File Manager. The file name appears in the following format: user name/ model type/ serial number/ record activity period/ date and time of when Records were saved. E.g. Locator Usage for Acme Ltd. DXL 215833 (12-01-12 to 17-02-12) __ (03-03-2012--14-39-07)

Note: All saved Record files can be reviewed whether the Locator is connected or not.

ANALYSE

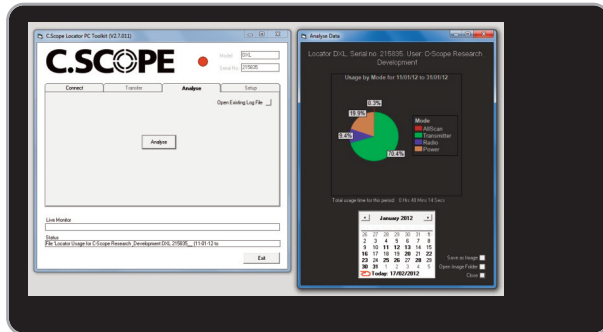
Examining the Records using the Analyse Button

To see a simple pie chart of how a Locator has been used, select the 'Analyse' button.

You can now move between months and see the changes in the detection mode usage over that period. Days within a month when the Locator has been used are highlighted. Selecting a highlighted day will show what percentage of that day's usage had been in each mode.

Also indicated is the total usage time, i.e. how long the Locator has been used over the selected period.

You can save any of the pie chart images to your computer for future reference.



The images are saved with a file name in the following format: user name/ model type/ serial number/ record activity period/ date and time of when image was saved.

E.g. Locator Usage for Acme Ltd. DXL215833 (12-01-12 to 17-02-12) __ (03-03-2012--14-39-07)

To retrieve any saved pie chart image, go to My documents/CScope/images or use the 'open image folder' button.

Records transferred to your computer by C.Scope Relay via email

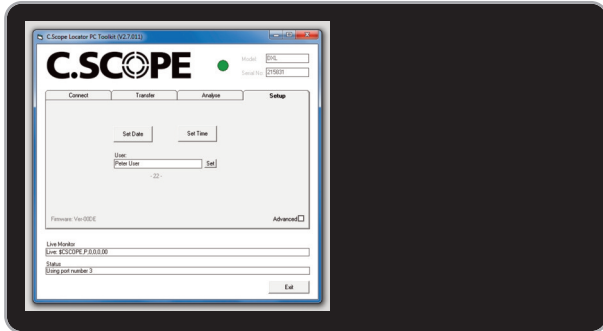
For viewing Records sent as an email via the C.Scope mobile phone App 'Relay', firstly save the email attachment to My Documents/CScope/data on your computer (for Windows Vista™ / Windows 7™, save the email attachment to Documents/CScope/data) and then browse to it using the 'Open Existing Log File' button in the Toolkit. The Records will then appear as if you had transferred directly from the Locator.

Further Record usage

The advantage of having the records transferred into a .csv file (a raw data file) is to enable a customer to create any number of tables or graphs or pie charts based on any of the parameters recorded in the .csv table. We have simply chosen to do mode usage pie charts but you could very easily create others.

For example, a graph could be created to show the length of time a Locator is used and when in the day that usage occurs. The options are numerous and relatively easy to create.

SET UP / Support



While the Locator is connected you can add or change the user name and the time and date on the computer from the 'Setup' tab.

You can also enable the advanced features. These features allow the re-allocation of Bluetooth® wireless technology Ports and the 'Transfer All' function.

Be aware that the 'Transfer All' function could take over 30 minutes to complete and may contain more than 12 months usage.

Consider using the 'Transfer by date' to select specific usage periods, reducing the data transfer time.

Note: If you select 'Transfer All', once the Records have started to be transferred you can release the On/Off switch on the Locator. It will switch off the display but continue to transfer the entire Locator memory.

Note: Changing the time and date using the Toolkit will not amend any of the existing Records on the Locator.

Support

To check the version number of your Toolkit press CTRL A when you have initially opened the Application.

For further information on the range of Data Logging Cable Avoidance Tools and Locators, how to use them and their applications, contact your local C.Scope or your local C.Scope distributor.

Glossary of Terms

Glossary of Terms

BLUETOOTH®: A proprietary open wireless technology standard for exchanging data over short distances.

The Bluetooth® word mark and logos are registered trademarks owned by Bluetooth SIG, Inc. and any use of such marks by C.Scope International Ltd is under license. Other trademarks and trade names are those of their respective owners.

COMPUTER/PC: Windows® based computer using Microsoft® Windows XP™, Windows Vista™ and Windows 7™ only.

Microsoft, MSN, Microsoft® Windows XP™, Windows Vista™ and Windows 7™ are trademarks of the Microsoft group of companies.

C.SCOPE PC TOOLKIT ('Toolkit'): C.Scope PC Application that transfers Locator Activity Records from C.Scope CXL-DLB, DXL-DLB and MXL-DLB Cable Avoidance Tools to a Windows™ based computer.

GPS: Global Positioning System.

LOCATOR ACTIVITY RECORDS ('Records'): The data that is stored on the Locator providing Date, Time, Mode, Frequency, Depth and Signal Strength.

LOCATOR: One of either CXL-DLB, DXL-DLB or MXL-DLB Cable Avoidance Tools.

MODE USAGE : Describes the proportion of Locator use in Power, Radio, Generator and *All*/Scan modes.

PORT NUMBER: The port number identifies which port is being used for a particular computer connection.

Note: The C.Scope PC Toolkit will only operate with port numbers within the range 1 to 15 inclusive.

PAIRING: When two Bluetooth® wireless technology devices are configured to communicate with each other they are 'Paired'.

TRANSFER ALL: Copy and transfer the entire contents of the Locator's memory to a computer.